

SOUTHEASTERN MASSACHUSETTS CHAPTER ANNUAL MEETING - NOVEMBER 8, 2003

As Chairperson for the SEM/AMC, I am pleased to submit my annual report to the chapter membership. We have enjoyed an outstanding year of activities and I hope you will read all the reports accompanying this summary. It is an honor and a privilege to work with such a dedicated group of volunteers. Thanks to all the chapter leaders for your volunteer time, and energy, as well as the skills to provide activities that are safe, embrace diversity, and Leave No Trace conservation ethics.

The Executive Board has had a very successful and productive year. All vice-chairperson positions, with the exception of Communications were filled. In addition the following persons were appointed to positions and committees as follows: Auditors: Charlie Farrell and Dexter Robinson; Archivist/Historian: Elsie Laverty; Distinguished Service Award: Bob Bentley, Chairperson, Louise Anthony, Anne Chace, Bruce Dunham, Elsie Laverty; Nominating Committee: Paul Anthony, Connie Austin, Dave Bennett, Chairperson, Pauline Jordan and Barbara Leland; Social: Connie Austin; WEB Master: Dexter Robinson. Thank you for your dedication and service. Family Activities Chairperson was vacant for the year.

Club-wide liability and insurance industry changes effect us all. Beginning in September the board unanimously voted to adopt the AMC OLDC recommendations. All chapter activity leaders are required to obtain participant's signature on a waiver form. A copy of the form is available on the chapter website: AMCSEM.org. Our executive board provided input to the Outdoor Leadership Development Committee (OLDC) with respect to leadership qualifications, requirements and recommendations. The board voted to create a new appointed officer position, Vice-Treasurer.

Two milestones in 2003 for our chapter were the 20th year anniversary of our adopted trail, Lonesome Lake. This year marked the 15th anniversary of SEM Chapter Hut Night.

The Hiking and Ski Committees held a successful Winter Festival. Thanks to "mother nature" this was a great year for our winter activities, both hiking and skiing! Congratulations to Erika Bloom, Patrick Holland, Barbara Hathaway and Sara Beard and winter leaders for a wonderful season of activities. Our annual Spring Fling was held on May 3 at the Duxbury Senior Center. A potluck dinner preceded a program on the Bay Circuit Trail and Greenway. Thanks to Vicki Fitzgerald, the Vogel Family, Sue & Dexter Robinson, and Louise Anthony for a successful "fling" evening. Back by popular demand, the Summer Picnic was held on Peddocks Island in Boston

Harbor. Thanks to Patrick Holland and Bill Ruel for a fun filled day and overnight camping experience.

A most enjoyable day of fun, fellowship, food and activities highlighted the 3rd annual Leadership Appreciation Day. Special thanks to Janet DiMatia and Barbara Hathaway; Cape Hike Leaders, Biking and Canoe/Kayaking for providing excursions in beautiful Nickerson State Park. Leaders were presented SEM/AMC visors. Look for them on the heads of leaders at your next chapter outing!

Our chapter applied for over \$2,000 in Supplemental Dues Allocation (SDA) funds to support National Trails Day, and Leadership Development. Special thanks to Patrick Holland for obtaining a \$500.00 matching grant from AOL Time Warner Book Group for SEM/AMC National Trails Day. AMC Outdoors Provided not one, but TWO articles about the trail work of our chapter. Laura Smeaton, Education Vice-Chairperson for Education attended a weekend training program sponsored by Outdoor Exploration. The board provided 7 chapter leaders scholarships for SOLO Wilderness First Aid training. Alan Ruiz was the recipient of the Hanson Scholarship and successfully completed Mountain Leadership School in June. Laura Smeaton will attend the first annual AMC Leadership Training Institute in December.

Special thanks to Bob Vogel for conducting a meeting in my absence and drafting the annual chapter budget. Bob, Dexter Robinson and Mike Woessner completed the required AMC audits and all chapter financial reports are computerized. The Board adopted a new financial reporting form for recording income and expenses for all chapter activities. "Hats off" to Dexter Robinson in his leader role as chapter webmaster. Check out those pictures!

My sincerest thanks to the members of the 2003 SEM Executive Board for the opportunity to work together, support the development and growth of our chapter, and contribute to the AMC mission to enjoy, wisely use and help maintain mountains, trails, and rivers. The chapter and I salute Bob Vogel, Barbara Vogel, Mike Woessner, Nancy Beach, Ed Foster, Janet DiMattia, Linda Church, Louise Anthony, Steve Tulip, Erika Bloom, Linda Cronin, Barbara Hathaway, and Patrick Holland. May you continue to serve the AMC and our chapter in various capacities now and in the future. To me you are not just a member of a board or organization, but also friends. It is the latter quality that makes our SEM Chapter the best. Thanks for the memories and see you on the trail!

Anne Chace
Chair

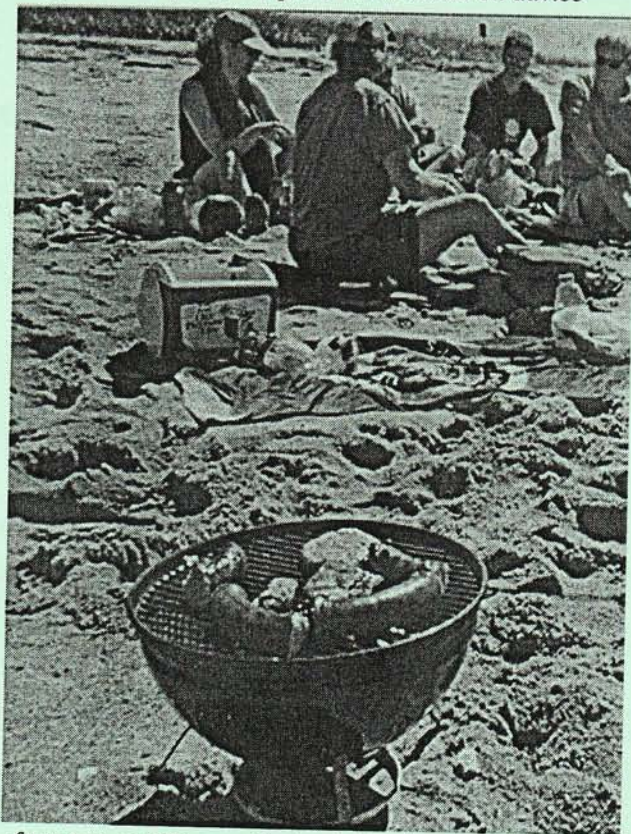
CANOE AND KAYAK

In spite of a slow start due to a cold rainy spring, at the end of September we had 803 paddling days, a modest increase from the 789 paddler-days at the same time last year.

The April pool safety session was held in the Sandwich High School swimming pool. Instructor Dick Coveney demonstrated both aided and self-rescue. Participants were able to practice both techniques.

We've continued with "paddleQues". Grills and charcoal are carried by canoe to the lunch stop, and paddlers are invited to bring something to grill. Everything from simple hot dogs to swordfish and steak have been sampled.

We've begun keeping notes on the timing of tide dependent trips. In the past, we've relied on advice



from two paddling guide books, but found them inadequate for the detailed tidal information we need. We now have a much better record of the leeway in launch time for trips such as Monomoy and Barnstable Harbor to assure we have enough water to avoid sand bars. In the case of Monomoy, missing the high tide by about an hour can turn an eight mile trip into a ten mile one.

The Canoe/Kayak Committee web page was added to the Southeast Chapter site. I want to thank Art Hart for maintaining the Canoe/Kayak web page these past

several years. Thanks to our trip leaders. Ray Buchan, Dick Coveney, Janet DiMattia, Heidi Ferreira, Bill Fischer, Art Hart, Jeri Housley, Rick McNally, Loretta O'Brien, Jeff Tubman, Jerry Raymond, Dave Shephard, Max Sarazin, Don Savino, Peter Selig, Muriel Thomas, Nancy Wigley, Bob Zani. Thanks to Max Sarazin for maintaining the statistics on our trips, posting trip summaries, bringing weather reports predicting clearing skies for so many of our trips and for initiating and managing our "PaddleQue" events.

*Ed Foster
Canoe/Kayak Chair*

TRAILS

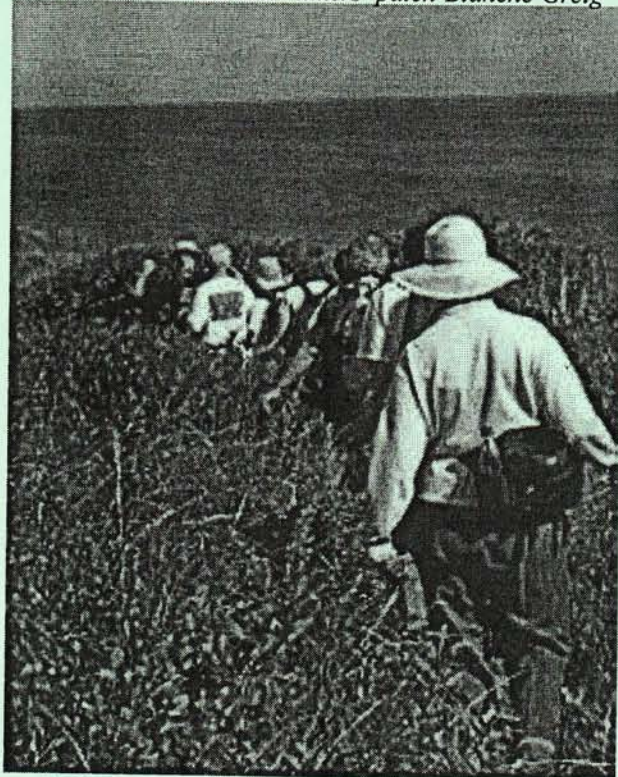
This is a banner year for the Trails Committee. We had our largest event ever on National Trails Day. Over 40 people of all ages (even a troop of boy scouts) volunteered to repair a damaged section of the Bentley Loop and the trips up to Lomesome Lake were very successful. The Chapter has been maintaining that trail for over twenty years now! A lot of first timers joined us this year. In addition to doing the required basic maintenance, we cleared blow downs, fixed a log bridge, installed new water bars, put up a retaining wall and a set of rock steps. We had four weekends at Lomesome Lake, with a total 43 people participating including some students from the Compass School in Boston. All told that's 832 hours of work! And we got more publicity this year: two write ups in the Outdoors magazine and a link on the AMC's website. Next year will be even better.

*Patrick Holland
Trails Chair*



CAPE HIKES

The 02-03 year was a busy one for the CAPE HIKES committee. One hundred one hikes were scheduled throughout the season with walks each Thursday and Sunday and the longer Saturday hikes and full moon hikes in the summer. Unfortunately a few activities had to be cancelled in the winter due to unplowed parking areas and not to the unwillingness of participants to trudge through the cold and snow. Special activities included the annual first hike-of -the-season potluck picnic, Christmas hike and party, chili hike & luncheon on a chilly Thursday in January, Earth Day educational hike and program in the National Wildlife Refuge in Mashpee and the hikers/kayakers picnic in May. Toys were collected for the annual "Toys for Tots" drive sponsored by the Marine Corp. and distributed to children on the Cape. Information tables and "mini" seminars were made available at the EMS Club Days. Two leaders earned their hikers' patch-Blanche Greig



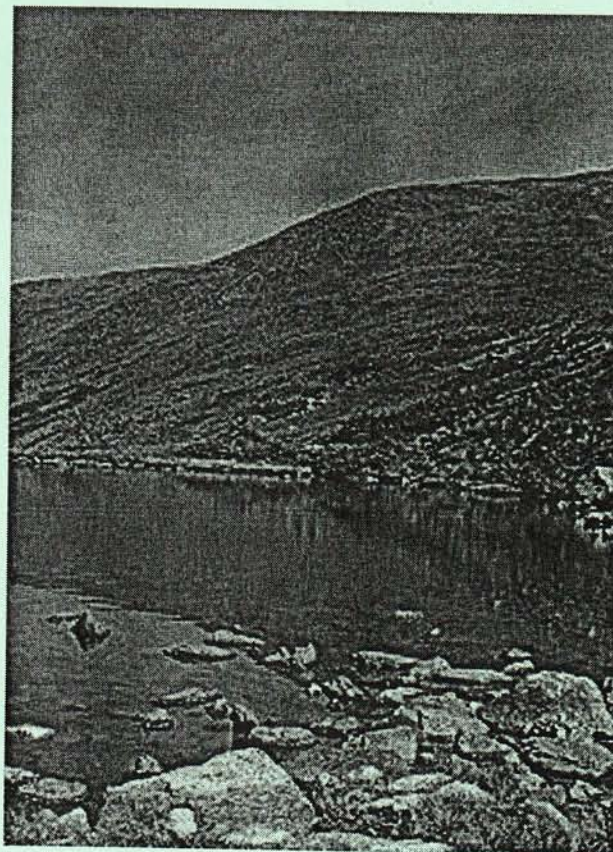
and Cheryl Newman Levine. A special **THANK YOU** to the 24 Cape Leaders. The hiking season would not be successful without your willingness to plan and lead the many activities. A warm **THANK YOU** also to all the Cape hikers for your participation and support. It was another great year for **CAPE HIKES**.

Janet DiMattia
Cape Hikes Chair

HIKING AND BACKPACKING

The SEM Hiking Committee sponsored over 48 hiking or backpacking trips in the past 12 months, with over 332 participants. Welcome to this year's new leaders: Rick Fordyce and Barbara Hathaway. Thank you to our hiking vice chairs, Patrick Holland and Charlie Farrell, and to all our hike leaders as well. SEM once again sponsored a successful winter hiking workshop and beginner winter hiking series. Our tradition of an annual "Chapter Hut Night" in the White Mountains continued. Special thanks to our SEM Rock Climbing Coordinators, John Pereira and Brian Donelan, for organizing and leading rock climbing activities. They had 17 participants on 4 trips. The hiking committee looks forward to another year of local and mountain hiking as well as rock climbing activities.

Erika Bloom
Hiking Chair



BIKING

As we all know, the spring started very wet and snowy which did not fit in well with our new mountain bike series taking place in Massasoit State Park lead by Walter Mark, a new bike leader to AMC. Walter did lead one of the rides through the snow and then

diverted to the surrounding dry streets for a successful ride.

Our 25 summer rides were much more promising beginning with our new Vice Chair, Valerie Fontaine and a new leader to cycling, Bob Vogel. Bob led a fun ride on the canal for beginners which was well received. Bob promises to lead more off road experiences on wheels for us in the future while promoting new safety procedures for this riding style and terrain. Walter Mark also lead road rides this year in beautiful new territory of the south shore sharing his years of experience in good cycling skills and techniques

Highlighting 21 Fall rides were the "Leaders that you can have the most fun", as always, Elsie Laverty and Charlie Sullivan. Charlie always leads the gorgeous Westport ride, however this year led the fascinating Charles River Basin ride. And Elsie at her annual cookout on Columbus Day, invited a famous bike tour author for entertainment. Really, if we could drag away Stephanie O. from the NBW more often too.....

Walter Mark provided an excellent workshop on improving cycling techniques such as gear selection; cadence and hill climbing methods at Miles Standish which helped many new and veteran cyclists develop better skills.



Bike Hero for the second year in a row is Paul Currier for his continued relentless journey through rain, sleet and freezing rain on the streets of the Cape and surrounding areas, inspiring new leaders and bringing the joy of bicycling to so many. Paul has more rides scheduled throughout the years than anyone on well-chosen trails and areas. Please remember to thank Paul when you ride with him.

It has been the most rewarding two years that I know of as Bike Chair and I am extremely privileged to have ridden with some of the most extraordinary, inspirational people I have ever met. Please support your new Bike Chairs, Denise Malenfant and Valerie Fontaine.

Nancy Beach
Biking Chair

The first activity on January 11 at the Weston Ski Track was a workshop attended by 12 members of the SEM and other chapters. Weston's certified instructors provided the lessons.

The traditional MLK weekend at Applebrook B&B led by Sarah Beard, Bob Kaltchthaler and Barbara Hathaway as an Inter Chapter activity was a huge success. As always, it drew a large group of about 28 that filled all the rooms at Applebrook. In addition to skiing at Bretton Woods, the group enjoyed skiing and tubing at Great Glen Trails.

The Winter Festival was held at Borderland on January 26. Representatives from EMS and Braintree Ski Market provided tips on winter gear and snowshoes and demonstrated different styles of skis, respectively.

On Jan. 31 and Feb. 1, ten skiers joined Barbara Hathaway and Kathy Moss at Twin Mountain, NH. Skiing was great at Bretton Woods on Saturday, but skiers awoke to heavy snow on Sunday morning (9 " and still falling). Treacherous road conditions caused the plans to ski at Bear Notch to be aborted and skiers headed home before the roads got worse. The total snowfall from that storm was 19".

Bob Vogel and Barbara Hathaway braved the frigid cold at Windblown in New Ipswich, NH, on Feb. 16, to lead a group of approximately 8 other die hard skiers in "My First XC Ski Trip."

Sarah Beard and Bob Kalchthaler led a trip to Mountain Fare Inn at Waterville Valley on Feb. 21-23. Back country skiing at Greeley Pond was canceled because of extremely icy conditions, but the group enjoyed skiing the groomed trails at Waterville Valley.

Thanks to the leaders and co-leaders for their dedication, commitment, and optimism. I hope that many of you will participate in this season's activities. Regardless of your skill level, there's something for everyone in this year's schedule. Please remember to sign up for e-mail notification of short-notice, non-published trips.

Submitted by
Barbara Hathaway

SKIING

Skiing Report

2002-2003 Season

The cross country ski committee for 2002-2003 was comprised of Chair Barbara Hathaway, Vice Chair Sarah Beard, and members Wayne Taylor, Bob Kalchthaler and Claire Braye. Five successful local and weekend trips were held.

TREASURER



\$\$

First off Dexter Robinson deserves many thanks for his work in putting together the past two years audits for Joy St. He spent many hours sorting through documents and working with Charlie Farrell to compile information for the 2001 and 2002 audits at the same time. Dexter also has computerized our records into a Quicken program, which will make this years audit just a few keystrokes. For this I am very grateful. It has made my job a lot easier.

This year we continue to operate in the black. Total income which included the funds transferred from Fall River checking is \$26,503.43. Total expenditures to 10/22/03 were \$16,781.64. This leaves us \$9,721.79 in the black. This is due to the reserves built up in the past and supplemental dues allocation.

Anne Chace has also been very successful in acquiring monies through supplemental dues allocations for Outdoor Leadership Training, Leadership Appreciation and National Trails Day project.

Also this year the Board has approved the position of Assistant Treasurer. This person will help the current treasurer and get to know the job to be the successor pending the member vote.

Mike Woessner
Treasurer

CONSERVATION

Conservation issues continue to be integrated in chapter activities. Opportunities have been provided for individuals to sign up for AMC's Conservation Action Network at a variety of chapter events, including 2003 annual meeting and the 2003 Spring Fling. Conservation Corner, in the Southeast Breeze, offered another source of information about matters related to conservation.

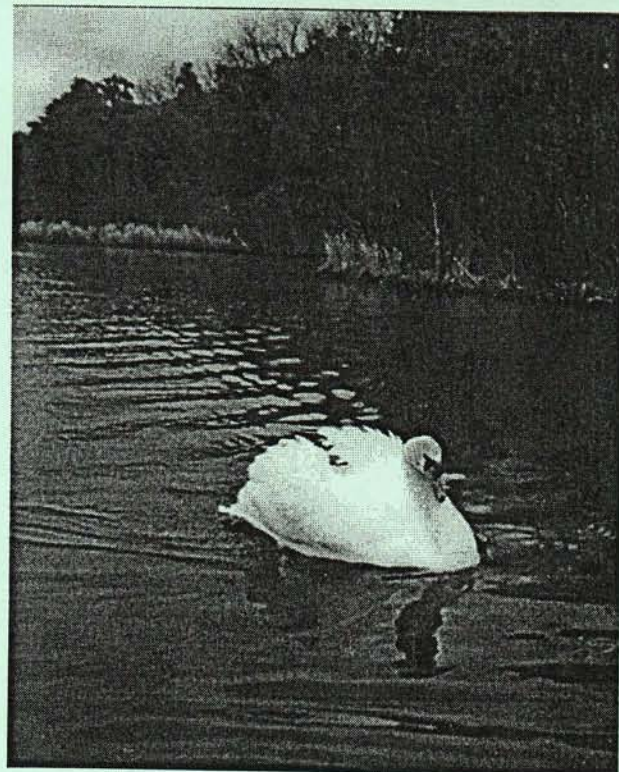
The major initiative for the 2003 year was the relocation of a damaged section of the Bentley Loop in Myles Standish State Forest. This was a collaborative effort that included the Trails Committee, Conservation Committee, and others. The efforts of Anne Chace, Chapter Chair, Patrick Holland, Trails Chair, and Bob Bentley contributed greatly to the event's success. The damaged section of trail was filled and a new segment of the trail was created. The large number of volunteers that participated made completion of the project a reality.

Louise Anthony
Conservation Chair

COMMUNICATIONS

Since holding the position of Communications Chair, I have published three Breezes, a special notice regarding the annual meeting date and the articles in this publication for the annual meeting. Currently I am working on the Breeze for Dec03-Jan04. Slowly I am mastering abode pagemaker software, which I use to create the Breeze. I have also been trying to put articles relating to AMC human interest in the bulletin. If you have any please email or send them thru snail mail to me. So far the position of Communications Chair has been a rewarding one.

Linda Church
Communications Chair

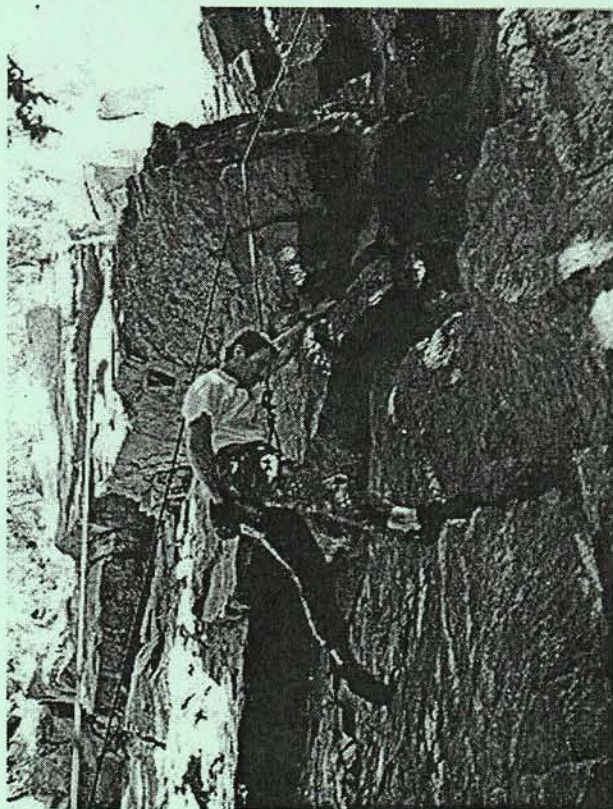


EDUCATION

Twenty hardy individuals participated in Leadership Training on a cold and rainy Saturday in April 2003. New leaders for biking, hiking, canoe/kayak and members from other chapters attended our training course. Anne Chace, Patrick Holland, Laura Smeaton and Alan Ruiz did an outstanding job as presenters. Highlights included holding the class in the AMES Mansion Library and lunch provided by D'Ann's Restaurant of Abington.

Fifteen folks successfully completed WFA training Oct 4-5 at Camp Lyndon in Sandwich, MA. Six individuals were SEM leaders and three were SEM co-leaders. Biking, rock climbing, skiing and hiking activity leaders were represented amongst participants. Kudos to Laura Smeaton's excellent effort in coordination and assuring another successful training.

Steve Tulip
Education Chair



MEMBERSHIP

New members joining our Chapter each month since the 2002 annual report are as follows:

New Members per month

Oct. 2002	38
Nov. 2002	39
Dec 2002	84
Jan. 2003	125
Feb. 2003	64
March 2003	25
April 2003	43
May 2003	116
June 2003	76
July 2003	118
Aug. 2003	69
Sept. 2003	60
Total Membership	857

	<i>As of 9/03</i>	<i>As of 9/02</i>
Contributing	8	10
Employees	15	11
Family	981	942
Individual	1584	1524
Junior	39	42
Life	52	53
Senior	81	80
Subscriber	2	2
Youth Leader	6	7
Total	2768	2671

I have mailed out 53 membership-in-a-bottle since November 2002. The Breeze was included in each bottle. Brochures were mailed by request to many prospective members who subsequently joined the AMC. Thanks to Dexter Robinson, the website has been very successful in recruiting new members. Of the 53 requests for MIB, 40 were downloaded from the website.

Linda Cronin
Membership Chair