



2002 Annual Report

Appalachian Mountain Club



SEM Chapter Chair Message

It is a privilege to submit my annual report to the members of the SEM/AMC as the chapter chairperson for 2002. I am very proud of the activities, leadership and volunteers in our chapter. My sincerest thank you to the members of the executive board and activity leaders for a productive, enjoyable year. Your executive board has been busy and accomplished many things during the past 12 months. Your board members represent the best in volunteer spirit and enthusiasm for the chapter and club. It is an honor me to work with such a wonderful group of dedicated AMC volunteers. I proudly represent SEM/AMC as a member of the Chapter Committee and have attended the three meetings held this year, as well as the summer chapter chairperson retreat. I also serve on the AMC Diversity Committee.

Following are highlights of the past year and acknowledgements of outstanding service to our chapter and AMC. Following the outstanding 25th anniversary celebration, "Breezin' Through the Years," and a holiday party hosted by the Vogel Family the newly elected executive board for 2002 plunged right into work. We attempted to fill all vacancies for vice-chairs, however continue to have openings for Conservation and Membership. If you are interested in either opportunity please contact Louise Anthony, Linda Cronin, or myself.

Bob Vogel did an excellent job of preparing the annual budget and has continued to assist Donna Desrochers, treasurer through the year. Bob has faithfully served as vice-chair and has been an excellent advisor and assistant to me. Our executive board minutes are accurately and expertly prepared and distributed by Barbara Vogel, secretary.

Other goals accomplished during the year were the planning of a Leadership Appreciation Day, training chapter activity leaders through scholarships to Outdoor Explorations, enrolling and maintaining a membership base of 3,000, raising funds for the 125th AMC capital campaign, conducting leadership and WFA training programs, assisting members with training scholarships and providing a broad level of activities for chapter members.

We also were honored to host the club-wide AMC Spring Gathering in April. Under the leadership of Dexter Robinson, our chapter welcomed members from all AMC chapters to a "Cape Cod Caper Weekend." Members of the Spring Gathering Committee included Erika Bloom, Dick Cairns, Vicki Fitzgerald, Wayne Taylor and your chapter chairperson. Many chapter members graciously volunteered as hosts and hostesses, trip leaders, greeters and also came to participate in the fun activities. Thank you all! It was the best club gathering ever!

Our chapter received a total of \$2,050 in Supplemental Dues Allocation (SDA) funds this year for the following activities: Spring Gathering, Outdoor Exploration leadership training scholarships, AMGA training for our Rock Climbing Coordinators, and new publication software for chapter communications. Each activity-funding request required the submission of a written proposal approved by the members of the Chapters Committee, upon approval of the SDA sub-committee.

Forty members of the chapter pledged \$2,500 to the AMC capital campaign. These monies will go towards the Kresge Challenge Grant for \$ 1 million. Thanks for your generos-

Chapter Chair Message (continued)

Thank you, Wayne.

I look forward to working with all of you next year as together we achieve new goals and create new opportunities for our SEM AMC chapter. I look forward to meeting many more chapter members as we enjoy, wisely use and help maintain mountains, trails, and rivers. See you on the trail!

Anne Chace
Chapter Chair

Hiking and Backpacking

The SEM Hiking Committee sponsored over 70 hiking or backpacking trips in the past 12 months, with over 436 participants. Welcome to this year's new leaders: Mike Woessner, Barbara Vogel, Bill Ruel, Laura Smeaton, Alan Ruiz, Elizabeth Balaschak, Barbara Leland, and Mike Vining. Thank you to our existing leaders as well (and anyone else I have overlooked!).



SEM once again sponsored a successful winter hiking workshop and beginner winter hiking series, as well as a summer mountain hiking series for those new to hiking in the mountains. Around 40 members attended our annual "Chapter Hut Night" in September at the AMC Cardigan Lodge in New Hampshire.

Special thanks to our Rock Climbing Coordinators, John Pereira and Brian Donelan, for organizing and leading rock climbing activities. They had 12 participants (8 female and 4 male), including one team of father and daughter (13 yrs.)

The SEM Hiking Committee looks forward to another busy year, with a strong group of leaders and co-leaders to continue on our hiking tradition locally and in the mountains.

Erika Bloom
Hiking Chair

Cape Hikes

The 2002 year was an active one for Cape hikers. One hundred and eighteen hikes were held during the season, including thirty-four longer Saturday hikes. Twenty leaders were responsible for the success of the hikes, many leading more than one hike a month.



year.

the combined picnic with the kayak/canoe committee. Again this year we donated toys to the "Toys for Tots" annual drive, and many of our Cape hikers participated in the Cape Cod Pathways *Sagamore to Provincetown* nine-day walk.

Thanks to all leaders and participants for making 2002 a truly "happy hiking"

Janet DiMattia
Cape Hikes Chair

Trails

2002 showed marked improvement over 2001. We had 11 participants at a "My First Trail Work" event in Borderland State Park who cleared and brushed a couple of miles of a trails and learned the finer points of trail work from the trails chair. And there were 10 people at the annual National Trails Day in Myles Standish State Forest. These participants cleared blowdowns, brushed, replaced waterbars and blazes along the 5-mile Bentley Loop trail. The Trails Committee also had help from a Girl Scout troop on a section of the Warner Trail in Foxboro.

Up north, on our adopted Lonesome Lake Trail in Franconia Notch (one of the heaviest used trails in the Whites), we had 18 participants over three weekend trips. They repaired and installed waterbars, put new blazes up on the Lake and Upper sections and of course, removed all the blowdowns and pesky brush from the trail. Its hard work, but the continual praise from passing hikers is more than worth it.

All told, the Committee had 47 people working on about 21 miles (one of these days I'll put that fancy GPS unit to work and get an exact number) of trail. Not too shabby. To everyone who participated in the work days, thanks for giving something back to the outdoors we all love so much.

And to those who didn't participate, I expect to see you next year! You don't know what you're missing!

Pat Holland
Trails Chair

Education

Highlights for this year included our annual Chapter Leadership Training event held at Borderland State Park last April. Thirteen new members successfully com-

equipment and Leave No Trace techniques and membership information were provided.

A record 32 participants successfully completed Wilderness First Aid training held this year in October at Camp Lyndon in Sandwich, MA. The training was sponsored by our chapter and taught by SOLO (Stonehearth Outdoor Learning Opportunities). The expert team of instructors was put to the test handling a great and gregarious mix of experienced AMC Leaders and young AmeriCorps and YMCA staff. Laura Smeaton, our Education Vice-Chair, did an outstanding job handling the food service logistics and received great praise from the group.

Steve Tulip
Education Chair

Canoe and Kayak

This has been our most active year ever. At the end of September, with a month of paddling remaining, we had 789 paddler-days. Although two trips were rained out in early October, we could still approach 900 paddler-days by the end of the season. The August 10 trip to the Pocasset River in Bourne attracted 34 paddlers, which may be a record.



We supported the AMC Spring Gathering by offering trips on both Saturday and Sunday of that weekend. On Saturday, 20 paddlers enjoyed themselves exploring Scorton Creek.

This year, a major change was to schedule the mid-week trips all season long on Wednesdays. Previously, they had been switched to Thursdays after the Cape Hikes ended. Wednesdays work out well, providing a longer time break between them and the Saturday trips.

The April pool safety session was cancelled and re-scheduled for June. It was held in the Sandwich High School swimming pool and attended by 12 instructees. Dick Coveney, with the assistance of Jeri Housley and Art Hart, demonstrated both aided-rescue and self-rescue. The instructees were able to practice both techniques.

Max Sarazin introduced the "paddleQue". On the Swan River and Gull Pond trips, he carried grills and charcoal in his canoe, and we all enjoyed grilling hot dogs, tofu burgers, bratwurst, etc. at our lunch break.

Several of our especially memorable paddles were: The July 27th trip to Monomoy Island under very calm conditions where we saw well over a hundred seals. The

had clear skies by the lunch break. The moral? Don't be too quick to dismiss a trip because of clouds or possibility of rain.

You might miss out on a great paddle.

There also were several new trips this year: Marion Harbor to Bird Island, led by Dick Coveney; Megansett Harbor, led by Nancy Wigley; two trips in the Wareham area - the lower Weweantic River and Onset Harbor, both led by Don Savino; and Shoestring Bay in Cotuit, led by Bill Fischer.

Thanks to all who've led trips this year, and especially to those first time leaders: Katie DePew, Bill Fischer, Dave McGlone, Gerry Raymond, Don Savino, and Peter Selig.

Also, welcome to our new Vice Chairman, Bill Fischer, thanks to Art Hart for the Canoe/Kayak web page, and finally our gratitude to Max Sarazin for maintaining the statistics on our trips, posting trip summaries and for bringing weather reports predicting clearing skies for so many of our trips.

Ed Foster
Canoe/Kayak Chair

Skiing

The ski committee for 2001-2002 consisted of Chair Barbara Hathaway, Vice Chair Sarah Beard, and members Wayne Taylor, Bob Kaltchthaler and Claire Braye. Although there were two local ski activities and three weekend ski trips planned, only the weekend trips to NH and VT took place – and even they were hampered by Mother Nature.

The traditional MLK weekend at Applebrook B&B led by Sarah Beard and Bob Kaltchthaler as an Inter Chapter activity was as popular as ever, drawing a large group of skiers and snowshoers. Snow cover was light and crusty for Wayne Taylor and Mary Leeson's backcountry ski and snowshoe trip in the Crawford Notch area, but they'll lead it again this season. Sarah Beard and Barbara Hathaway hosted a small group of skiers at the Craftsbury Outdoor Center in the Northeast Kingdom of Vermont. Despite the muddy parking lot there was plenty of snow on the well-groomed trails. Anne Chace and Wayne Taylor closed out the ski season the second weekend in March with their trip to the Mountain Fair Inn near Waterville Valley.



Thanks to the leaders and co-leaders for their dedication, commitment and optimism in volunteering for

Conservation

The Southeastern Massachusetts Chapter continues to be involved in Conservation issues in the local area and beyond.

During the current year, the SEM Chapter exhibited at Earth Day Celebrations at the South Shore Natural Science Center in Norwell and at the Greater New Bedford event. Visitors were made aware of club activities, met an appropriately dressed model, and participated in hands-on energy activities.



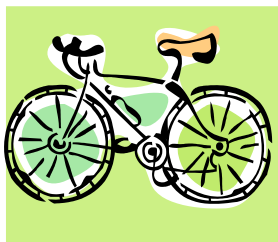
Another area of concern involves the future of Massachusetts forests and parks. Volunteers gathered signatures on a petition to support the parks at Miles Standish State Park. In addition, members of SEEAL, the Southeast Environmental Education Alliance of Massachusetts, were made aware of the initiative. Several members signed the petition.

Several areas have been identified for future attention by SEM Conservation. From the trails at Miles Standish to the Flora B. Pierce nature Trail, 2003 promises to be a productive year. Through vigilance and awareness, we can have an impact on the natural environment we all treasure.

Louise Anthony
Conservation Chair

Biking

The biking schedule for 2002 started with the unsuccessful beginner, '1st ride of the season', due to bone chilling weather, but this did not hamper the next Gala Event held at veteran bike leader Elsie Laverty's home. A Potluck lunch and discussion was highlighted by a beautiful slide show of an Alaska Bike Tour narrated by Narragansett Chapter bike leader Mike Krabach.



Rides throughout the spring were sporadic due to 'rain outs'. April was a good month, featuring great rides at the Spring Fling led by Jim Kilpela, Sheila Place and Alice Oberdorf. Dave Harris of Hingham led his fabu-

Fall rides started with Alice Oberdorf's Labor Day ride to Martha's Vineyard, which turned out to be a huge success. What would the Cape do without Alice?

Three new leaders scheduled rides this Fall: Charlie Sullivan in Westport, Valerie Fontaine in Middleboro and Stephanie Olbrych in Norton, which unfortunately got rained out. All turned out to be excellent lead rides on new roads to the chapter.

Last but not least to be mentioned are actually the rides with the most participation and continuity having been led by Cape leaders, Paul Currier, Alice Oberdorf and Connie Austin on Tuesdays. Paul Ligor led rides on Sunday while Ed Foster led rides on many Saturdays.

Paul Currier, the bravest of all, will actually continue Tuesday rides on the Cape throughout the winter. He is, by far, the Bike Hero of the year.

Nancy Beach
Biking Chair

Membership

Since November 2001, 72 memberships in a bottle were mailed to new members. The Chapter website and the information brochure have continued to attract new members and contribute to the increase in membership. Of the 817 new memberships in 2002, 486 were individual memberships, 245 were family memberships,

New Members per month for 2002	Total Memberships as of Oct '02	
Nov. 2001	Contributing	10
89	Employees	
Dec. 2001	11	
100	Family	939
Jan. 2002	Family Life	
72	3	
Feb. 2002	Individual	
32	1524	
Mar. 2002	Junior	42
66	Life	53
Apr. 2002	Senior	80
113	Subscriber	
	2	

and 86 were other types of membership.

Linda Cronin
Membership Chair